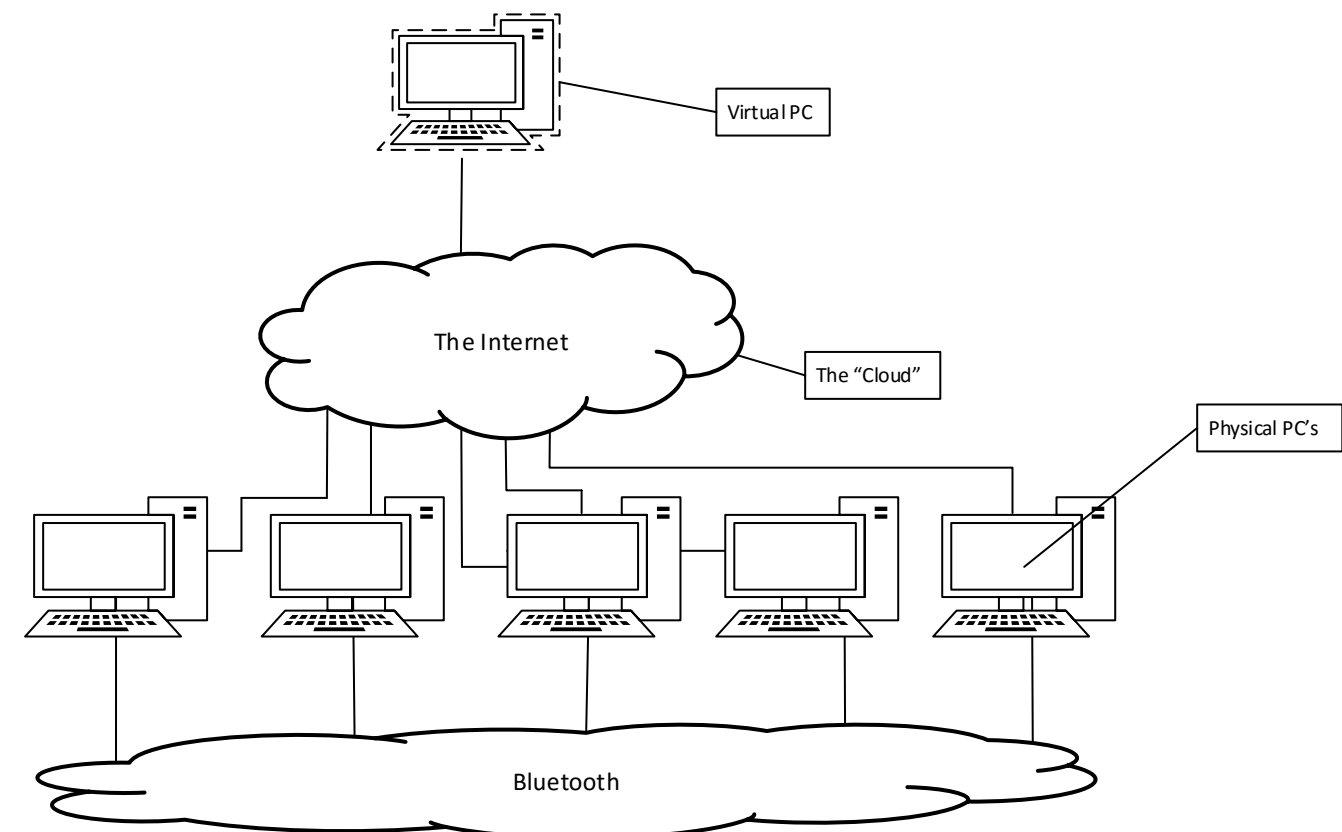


The Beowulf concept.

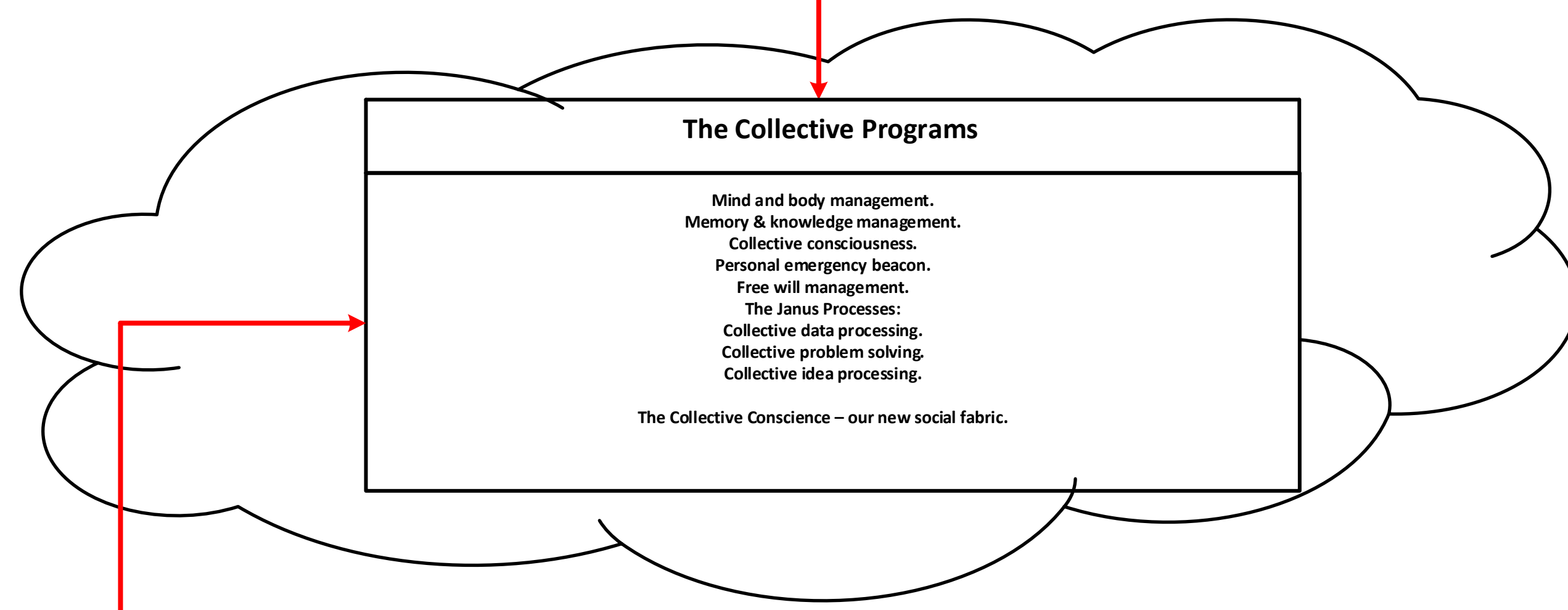
All PCs continue to work as independent machines. The Beowulf software allocates resources between the PC's stand alone tasks, and the shared task of the cluster. PC's can be added or removed without any effect on the shared task - e.g. to repair a faulty machine or increase the computing power of the cluster. The virtual PC generated does not physically exist - the shared task runs as separate components on the individual PC's with the output available at any of those PC's - and so is an illusion of computing. And yet this non-existent illusion generates the performance of a \$5 million super computer for \$50,000 of desktop PC's. The PC's do not have to be physically connected to each other but can work through the cloud. A PC retailer in the US "Beowulfed" the display PC's in its stores across the US and sold the computing power for a tidy sum! Multiple tasks / programs can be run on a single cluster in the same way multiple programs can run on a single PC.



Legend of Selves.

- A: Before the fall.
- B: The fall.
- C: The rise of the kings.
- D: The rise of the priests.
- E: The rise of philosophy
- F: The rise of the suffragettes / feminists
- G: The rise of the merchants and RALF's
- H: The way back.
- I: Grace again - It's the end of the world as we know it and I feel fine. (Thanks REM)

The One - The Great Library - The Sum Of All Knowledge - Memories

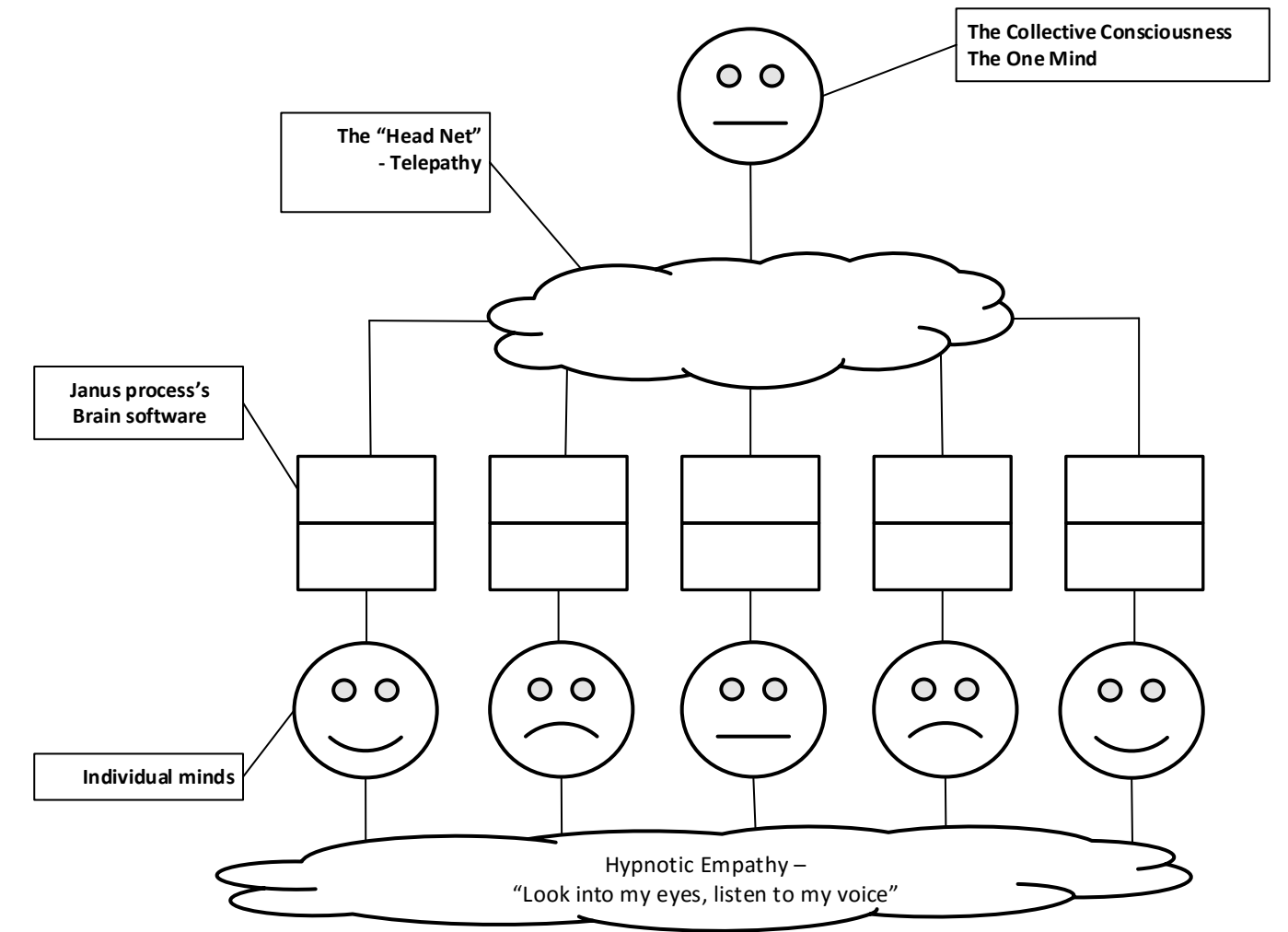


From The X Files:
 "Conscience. We hear it every day. It's just the voices of the ancestors trying to save us from our own damnation."

Yet due to the mirrors, we hear the voice of the devil - those who have lived trapped in mirror image. Thus, as Santayana states "We are condemned to repeat what we cannot remember."

One Planet, One People, One Mind
 It's amazing, Grace.

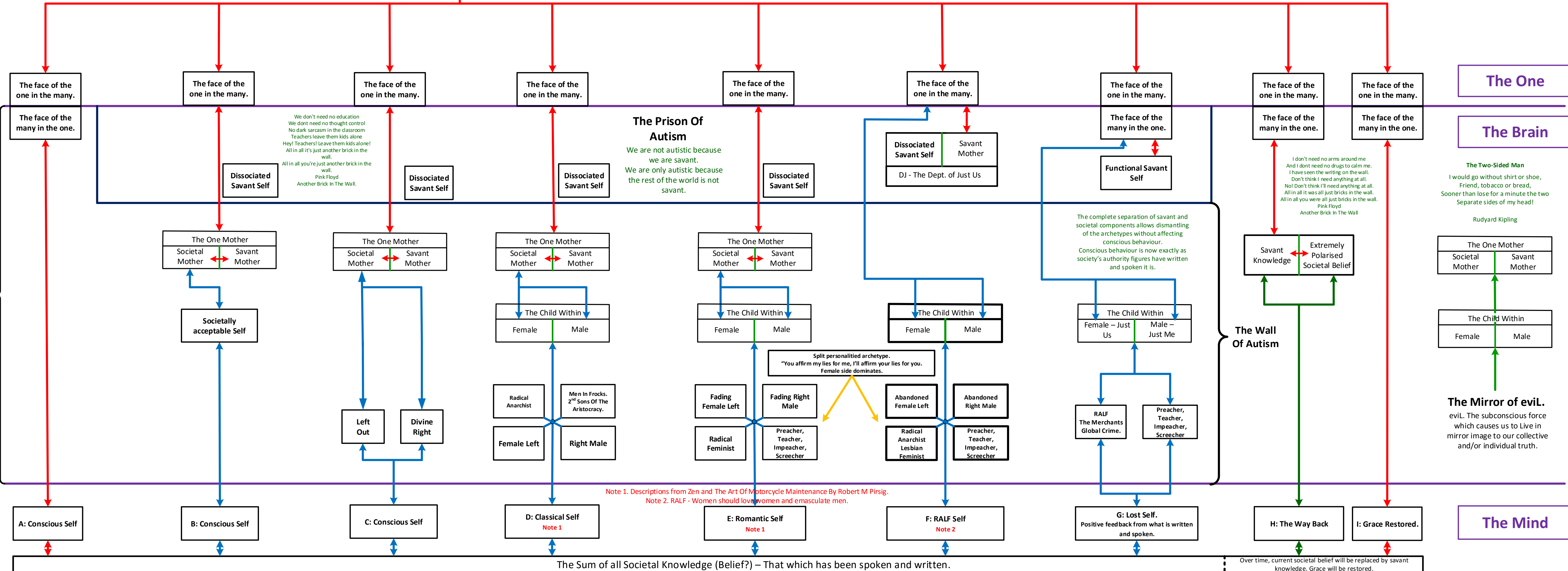
The One Mind.
 Like Beowulf, it is a virtual mind and thus doesn't physically exist. That doesn't stop it working 24 hours a day. Each task or program running on the One Mind is a small task running on many individual brains and sharing data and processing functions. The task is managed from any of the participating individuals through their consciousness.
 Any person faced with a problem too big for one brain can pass the problem off to the collective thus starting a new task. Any one else with an interest in that problem can then join in. 2 heads are better than 1, 20,000 heads are better than 2. The output is common knowledge so becomes available to all who participate, and anyone else who later asks.
 This is the Computer Designed for Deep Thought.



The Janus Process.
 Janus - the gatekeeper - is the name I use for the set of metaphysical processes or programs that run on our individual brains to manage our "headnet" connections. It is firstly a firewall, meant to keep the collective processes sub-conscious so as not to distract our conscious self. It is also a resource manager, allocating our spare mental processes (about 80% to 90%) to collective tasks according to our conscious will. Lastly it is a set of default, or inbuilt, tasks including the collective conscience, memory management, the great library of common knowledge and subconscious communication services.

You are at once a beating heart and a single heartbeat in the body called humanity.
 Dr Wayne Dwyer "You'll see it when you believe it."

Janus



Note 1. Descriptions from Zen and The Art Of Motorcycle Maintenance By Robert M Pirsig.
 Note 2. RALF - Women should love women and emasculate men.

One Planet, One People
 One Mind, One Voice
 One Problem, One Solution
 You!
 The Power of One.

The Alternative Solutions Trust
 Working for an ethical future -
 Not because we have to
 Just because, at last, we can.

The Fall From Grace Standard Model
 © 2015 The Alternative Solutions Trust
 www.altsol.com.au editor@altsol.com.au
 PO Box 201 Greensacres SA 5086